

DEVELOPMENT APPLICATION

PROPOSED BATTERY ENERGY STORAGE SYSTEM (BESS)



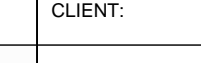

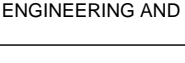





**103 Cabbage Tree Road,
Williamstown**

DRAWING SCHEDULE

LDA00	COVERSHEET
LDA01	SITE ANALYSIS
LDA02	SITE PLAN - CONTEXT
LDA03	LANDSCAPE PLAN
LDA04	PLANT SCHEDULE, IMAGES, DETAILS AND ELEVATION
LDA05	ELEVATIONS
LDA06	VIEWPOINT 1
LDA07	VIEWPOINT 2
LDA08	VIEWPOINT 3
LDA09	VIEWPOINT 4
LDA10	VIEWPOINT 5
LDA11	VIEWPOINT 6
LDA12	VIEWPOINT 7
LDA13	MAINTENANCE SPECIFICATION

NOT FOR CONSTRUCTION

LANDSCAPE ARCHITECT:			BAR SCALE:			ASPECT:			CLIENT:			ENGINEERING AND PLANNING:			PROJECT:			TITLE:			STATUS:		
<div><p>Conus Landscape Architecture 158 Grandview Rd, New Lambton Hills, NSW 2305.</p><p>p. 02 4950 9195 e. info@conuslandscapearchitecture.com.au w. conuslandscapearchitecture.com.au abn. 52 144 562 756</p></div> <div><p>Australian Institute of Landscape Architects</p></div> <p>Registered Landscape Architect: Anton Conus AILA No. 8420</p>			<div><p>Hive Battery Developments Pty Ltd</p></div> <div><p>Quintas Energy</p></div>			<div><p>HDB</p></div>			<div><p>Proposed Battery Energy Storage System (BESS) 103 Cabbage Tree Road, Williamtown</p></div>			<div><p>COVER SHEET</p></div>			<div><p>Development Application</p></div>								
																		C 06/12/2023 Final submission			SCALE: DATE: JOB No:		
																		B 29/11/2023 Draft submission for review			06/12/23 23.41		
																		A 27/11/2023 Preliminary concept for review					
																		REV DATE NOTATION/AMENDMENT					
			DO NOT SCALE DRAWINGS. CHECK ALL DIMENSIONS. FIGURED DIMENSIONS TAKE PRECEDENCE. THESE DRAWINGS ARE NOT FOR CONSTRUCTION			ISSUE: DWG No: PLOTTED:			DRAWN: CHECKED: APPROVED:														
						C LDA 00 1			DS AC AC														







NOT FOR CONSTRUCTION

LANDSCAPE ARCHITECT:		BAR SCALE:		ASPECT:		CLIENT:		ENGINEERING AND PLANNING:		PROJECT:		TITLE:		STATUS:																											
<div><div><div></div></div><div>Conus Landscape Architecture 158 Grandview Rd, New Lambton Hts, NSW 2305. p. 02 4950 9195 e. info@conuslandscapearchitecture.com.au w. conuslandscapearchitecture.com.au abn. 52 144 562 756 Registered Landscape Architect: Anton Conus AILA No. 8420</div></div>		<div><div><div></div></div><div>Australian Institute of Landscape Architects</div></div>		<div><div><div></div></div><div>1:1000 @ A1</div></div>		<div>Hive Battery Developments Pty Ltd Quintas Energy</div>		<div>HDB</div>		<table><tr><td>C</td><td>06/12/2023</td><td>Final submission</td></tr><tr><td>B</td><td>29/11/2023</td><td>Draft submission for review</td></tr><tr><td>A</td><td>27/11/2023</td><td>Preliminary concept for review</td></tr><tr><td>REV</td><td>DATE</td><td>NOTATION/ AMENDMENT</td></tr></table> <div>DO NOT SCALE DRAWINGS. CHECK ALL DIMENSIONS. FIGURED DIMENSIONS TAKE PRECEDENCE. THESE DRAWINGS ARE NOT FOR CONSTRUCTION</div>		C	06/12/2023	Final submission	B	29/11/2023	Draft submission for review	A	27/11/2023	Preliminary concept for review	REV	DATE	NOTATION/ AMENDMENT	<div>Proposed Battery Energy Storage System (BESS) 103 Cabbage Tree Road, Williamstown</div>		<div>SITE PLAN - CONTEXT</div>		<table><tr><td>SCALE:</td><td>DATE:</td><td>JOB No:</td></tr><tr><td>1:1000</td><td>06/12/23</td><td>23.41</td></tr></table> <table><tr><td>DRAWN:</td><td>CHECKED:</td><td>APPROVED:</td></tr><tr><td>DS</td><td>AC</td><td>AC</td></tr></table>		SCALE:	DATE:	JOB No:	1:1000	06/12/23	23.41	DRAWN:	CHECKED:	APPROVED:	DS	AC	AC
												C	06/12/2023	Final submission																											
												B	29/11/2023	Draft submission for review																											
												A	27/11/2023	Preliminary concept for review																											
												REV	DATE	NOTATION/ AMENDMENT																											
SCALE:	DATE:	JOB No:																																							
1:1000	06/12/23	23.41																																							
DRAWN:	CHECKED:	APPROVED:																																							
DS	AC	AC																																							



NOT FOR CONSTRUCTION

LANDSCAPE ARCHITECT:		BAR SCALE:		ASPECT:		CLIENT:		ENGINEERING AND PLANNING:		PROJECT:		TITLE:		STATUS:															
<div><div></div><div><div>Conus Landscape Architecture</div><div>158 Grandview Rd, New Lambton Hts, NSW 2305.</div><div><div>p. 02 4950 9195</div><div>e. info@conuslandscapearchitecture.com.au</div><div>w. conuslandscapearchitecture.com.au</div><div>abn. 52 144 562 756</div></div></div><div><div></div><div>Australian Institute of Landscape Architects</div></div></div>		<div><div></div><div>1:200@ A1</div></div>		<div><div></div></div>		<div><div>Hive Battery Developments Pty Ltd</div><div>Quintas Energy</div></div>		<div><div>HDB</div></div>		<div><table><tr><td>C</td><td>06/12/2023</td><td>Final submission</td></tr><tr><td>B</td><td>29/11/2023</td><td>Draft submission for review</td></tr><tr><td>A</td><td>27/11/2023</td><td>Preliminary concept for review</td></tr><tr><td>REV</td><td>DATE</td><td>NOTATION/ AMENDMENT</td></tr></table><div>DO NOT SCALE DRAWINGS. CHECK ALL DIMENSIONS. FIGURED DIMENSIONS TAKE PRECEDENCE. THESE DRAWINGS ARE NOT FOR CONSTRUCTION</div></div>		C	06/12/2023	Final submission	B	29/11/2023	Draft submission for review	A	27/11/2023	Preliminary concept for review	REV	DATE	NOTATION/ AMENDMENT	<div><div>Proposed Battery Energy Storage System (BESS)</div><div>103 Cabbage Tree Road, Williamtown</div></div>		<div><div>LANDSCAPE PLAN</div></div>		<div><div>Development Application</div></div>	
C	06/12/2023	Final submission																											
B	29/11/2023	Draft submission for review																											
A	27/11/2023	Preliminary concept for review																											
REV	DATE	NOTATION/ AMENDMENT																											
										<div><table><tr><td>ISSUE:</td><td>DWG No:</td><td>PLOTTED:</td></tr><tr><td>C</td><td>LDA03</td><td>1</td></tr></table></div>		ISSUE:	DWG No:	PLOTTED:	C	LDA03	1	<div><table><tr><td>DRAWN:</td><td>CHECKED:</td><td>APPROVED:</td></tr><tr><td>DS</td><td>AC</td><td>AC</td></tr></table></div>		DRAWN:	CHECKED:	APPROVED:	DS	AC	AC				
ISSUE:	DWG No:	PLOTTED:																											
C	LDA03	1																											
DRAWN:	CHECKED:	APPROVED:																											
DS	AC	AC																											

PLANT SCHEDULE

Botanic Name	Common Name	Size (m)	Pot Size	Spacing
<u>Trees</u>				
Acmena smithii	Lilly Pilly	10H x 10W	45L	As shown
Casuarina glauca	Swamp Oak	12H x 6W	25L	As shown
Callistemon salignus	White Bottlebrush	9H x 6W	25L	As shown
Eucalyptus grandis	Rose Gum	25H x 12W	25L	As shown
Eucalyptus tereticornis	Forest Red Gum	25H x 12W	25L	As shown
Glochidion ferdinandi	Cheese Tree	8H x 7W	45L	As shown
Melaleuca linariifolia	Snow-in-Summer	7H x 6W	25L	As shown
Melaleuca quinquenervia	Broad-leaved Paperbark	15H x 7W	25L	As shown
<u>Shrubs</u>				
Callistemon citrinus	Crimson Bottlebrush	3H x 3W	200mm	1.5m
Clerodendrum tomentosum	Hairy Clerodendrum	4H x 3.5W	200mm	1.5m
Commersonia fraseri	Brush Kurrajong	4.5H x 4W	200mm	2m
Dodonaea triquetra	Hop Bush	2.5H x 2W	200mm	1.5m
Goodenia ovata	Hop Goodenia	2H x 2W	200mm	1m
Notalea longifolia	Mock Olive	4H x 3W	200mm	2m
<u>Climbers and Groundcovers</u>				
Lomandra longifolia	Matrush Grass	0.8H x 1W	tube	2/m2
Themeda australis	Kangaroo Grass	1H x 1W	tube	4/m2

NOTES:

1. All garden beds to contain premium imported garden mix with 5% organics mixed with site soil
2. Provide slow-release fertiliser to each plant to manufacturer's instructions
3. All garden beds to contain 80mm depth native hardwood chip mulch, similar to ANL 'Forest Fines'
4. All trees to be staked by 1800 x 50 x 50mm hardwood timber stakes fastened with hessian ties
5. All trees to comply with NATSPEC specifications
6. All turf to be Couch on 50mm premium topdress
7. All garden edges to be H4 treated pine



Acmena smithi



Callistemon salignus



Callisitemon citrinus



Casuarina glauca



Clerodendrum tomentosum



Commersonia fraseri



Dodonaea triquetra



Eucalyptus tereticornis



Eucalyptus grandis



Glochidion ferdinand



Lomandra longifolia



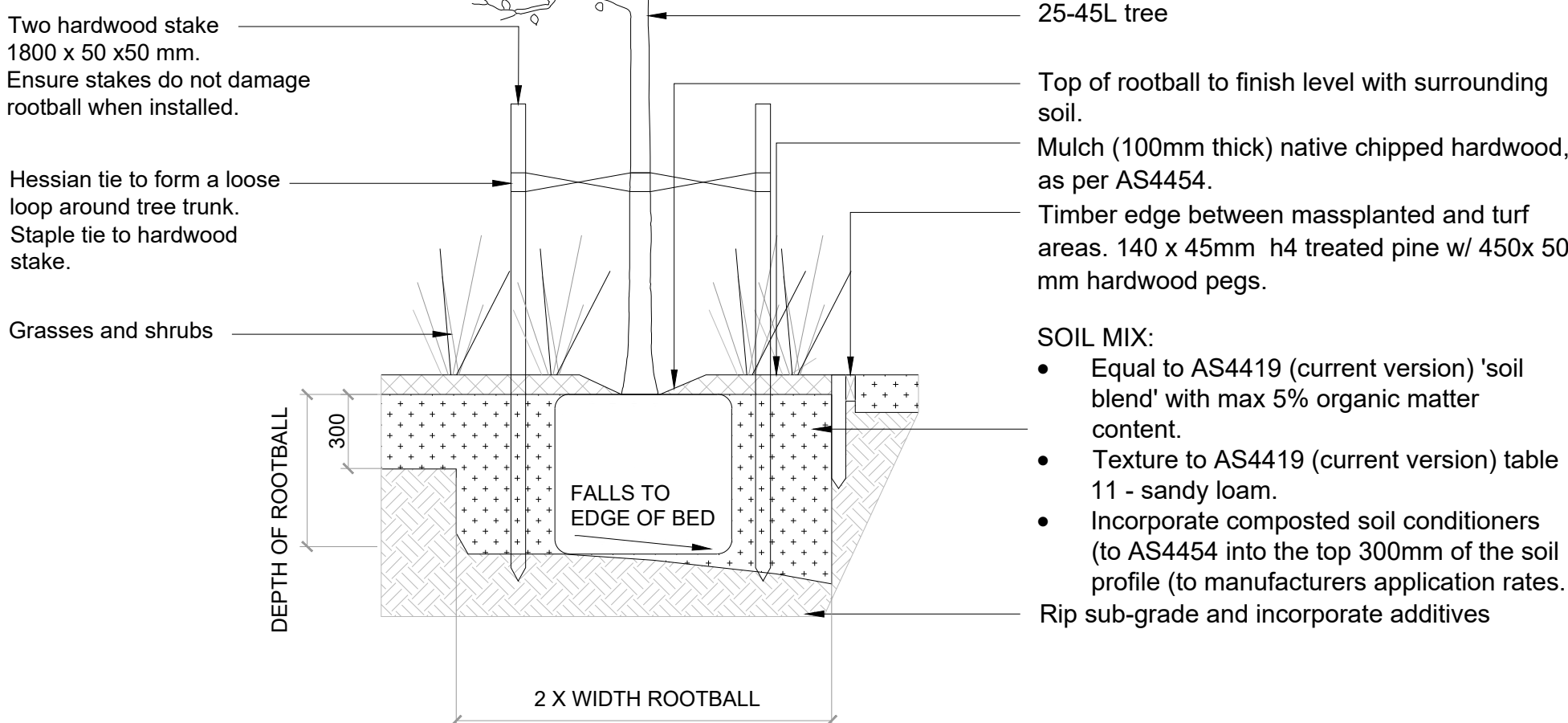
Melaleuca linariifolia



Melaleuca quinquenervia



Notalea longifolia





01 TREE DETAIL 1:25

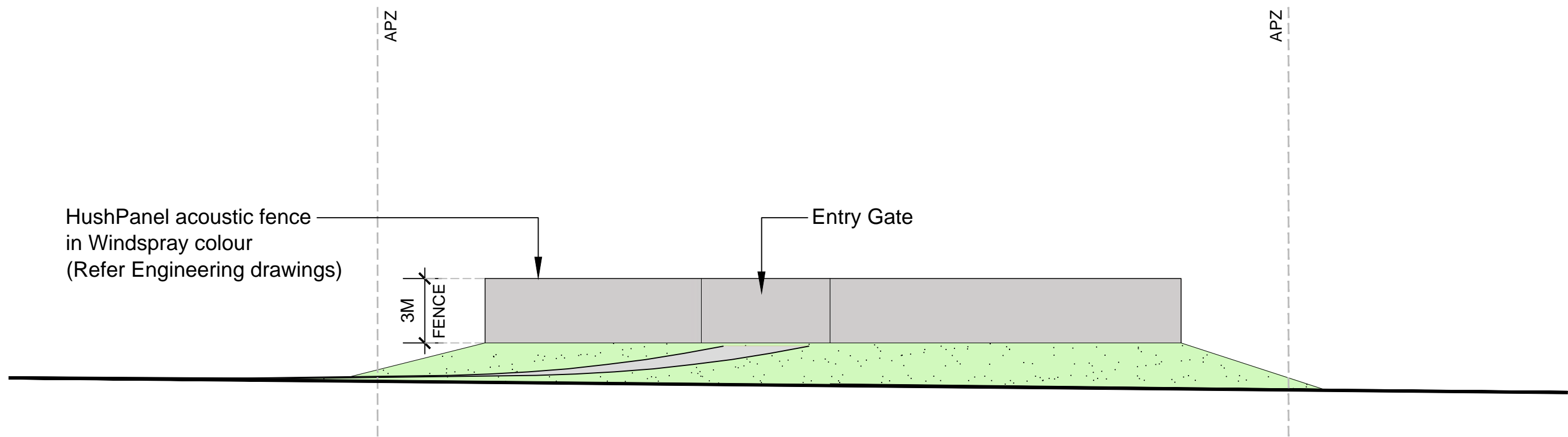
04 25-45L TREE IN MASS PLANTING - GENERAL



02 ELEVATION B2 (MATURED STAGE) 1:200
04

NOT FOR CONSTRUCTION

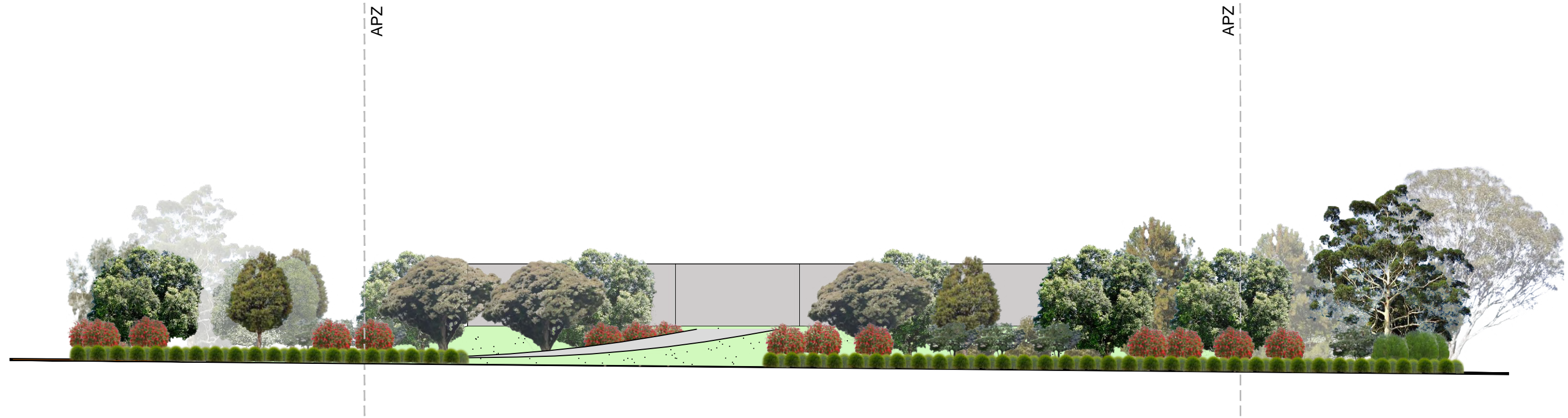
LANDSCAPE ARCHITECT:			BAR SCALE:		ASPECT:		CLIENT:	ENGINEERING AND PLANNING:			PROJECT:	TITLE:			STATUS:																				
<div><p>Conus Landscape Architecture 158 Grandview Rd, New Lambton Hts, NSW 2305.</p><p>p. 02 4950 9195 e. info@conuslandscapearchitecture.com.au w. conuslandscapearchitecture.com.au abn. 52 144 562 756</p><p>Registered Landscape Architect: Anton Conus AILA No. 8420</p></div>		<div><p>Australian Institute of Landscape Architects</p></div>				<div><p>Hive Battery Developments Pty Ltd</p><p>Quintas Energy</p></div>	<div><p>HDB</p></div>			<div><table><tr><td>C</td><td>06/12/2023</td><td>Final submission</td></tr><tr><td>B</td><td>29/11/2023</td><td>Draft submission for review</td></tr><tr><td>A</td><td>27/11/2023</td><td>Preliminary concept for review</td></tr><tr><td>REV</td><td>DATE</td><td>NOTATION/ AMENDMENT</td></tr></table><p>DO NOT SCALE DRAWINGS. CHECK ALL DIMENSIONS. FIGURED DIMENSIONS TAKE PRECEDENCE THESE DRAWINGS ARE NOT FOR CONSTRUCTION</p></div>	C	06/12/2023	Final submission	B	29/11/2023	Draft submission for review	A	27/11/2023	Preliminary concept for review	REV	DATE	NOTATION/ AMENDMENT	<div><p>Proposed Battery Energy Storage System (BESS)</p><p>103 Cabbage Tree Road, Williamstown</p></div>	<div><p>PLANT SCHEDULE, IMAGES, DETAILS AND ELEVATION</p></div>			<div><table><tr><td>SCALE:</td><td>DATE:</td><td>JOB No:</td></tr><tr><td>AS INDICATED</td><td>06/12/23</td><td>23.41</td></tr></table></div>			SCALE:	DATE:	JOB No:	AS INDICATED	06/12/23	23.41
C	06/12/2023	Final submission																																	
B	29/11/2023	Draft submission for review																																	
A	27/11/2023	Preliminary concept for review																																	
REV	DATE	NOTATION/ AMENDMENT																																	
SCALE:	DATE:	JOB No:																																	
AS INDICATED	06/12/23	23.41																																	
											<div><table><tr><td>ISSUE:</td><td>DWG No:</td><td>PLOTTED:</td></tr><tr><td>C</td><td>LDA04</td><td>1</td></tr></table></div>	ISSUE:	DWG No:	PLOTTED:	C	LDA04	1	<div><table><tr><td>DRAWN:</td><td>CHECKED:</td><td>APPROVED:</td></tr><tr><td>DS</td><td>AC</td><td>AC</td></tr></table></div>			DRAWN:	CHECKED:	APPROVED:	DS	AC	AC									
ISSUE:	DWG No:	PLOTTED:																																	
C	LDA04	1																																	
DRAWN:	CHECKED:	APPROVED:																																	
DS	AC	AC																																	



01
05 ELEVATION B2 1:200



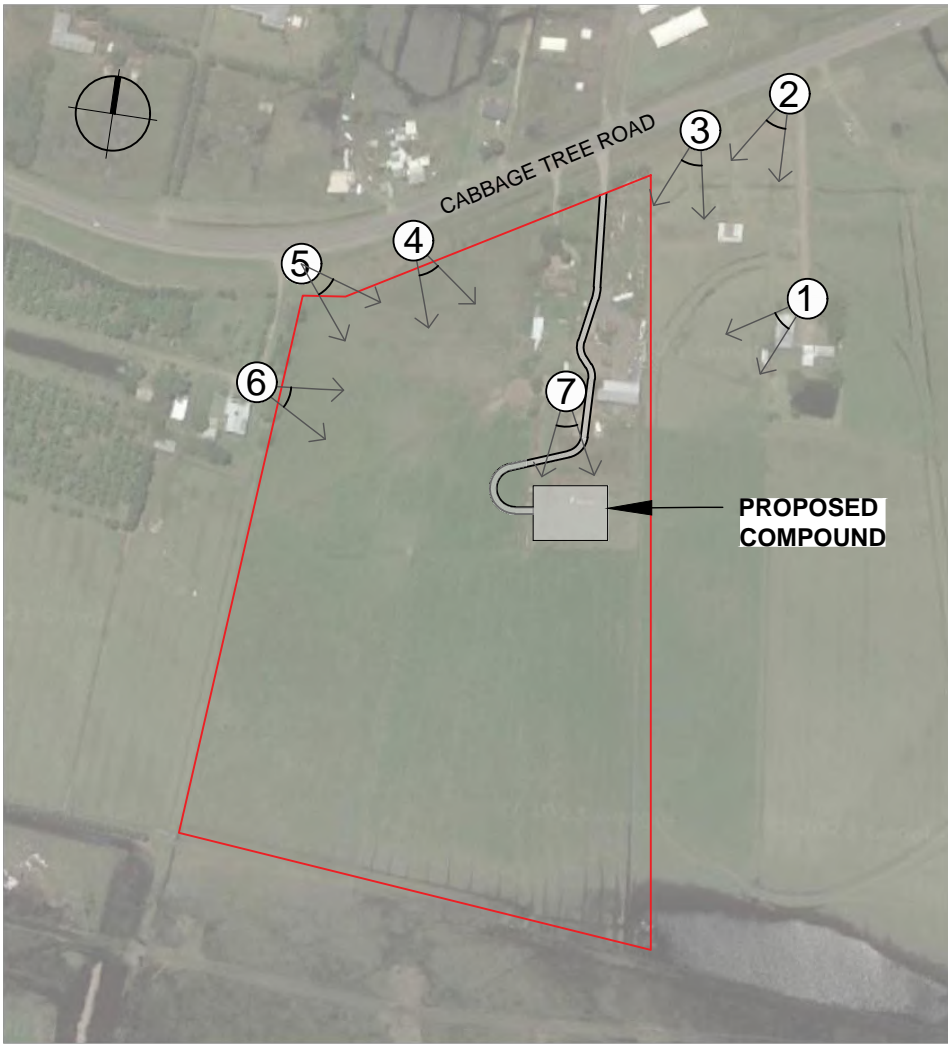
02
05 ELEVATION B2 (1 YEAR OF PLANTING) 1:200



03
05 ELEVATION B2 (5 YEARS OF PLANTING) 1:200

NOT FOR CONSTRUCTION

LANDSCAPE ARCHITECT:			BAR SCALE:	ASPECT:	CLIENT:	ENGINEERING AND PLANNING:			PROJECT:	TITLE:		STATUS:	
<div><div><div></div><div>conus</div><div>LANDSCAPE ARCHITECTURE</div></div><div><div>Conus Landscape Architecture</div><div>158 Grandview Rd, New Lambton Hts, NSW 2305.</div><div><div>p. 02 4950 9195</div><div>e. info@conuslandscapearchitecture.com.au</div><div>w. conuslandscapearchitecture.com.au</div><div>abn. 52 144 562 756</div></div></div></div> <div>Registered Landscape Architect: Anton Conus AILA No. 8420</div>		<div><div><div></div><div>Australian Institute of Landscape Architects</div></div></div>	<div><div><div></div><div>0 2 5 10 20M</div></div><div>1:200@ A1</div></div>		<div><div><div></div><div>Hive Battery Developments Pty Ltd</div></div><div><div>Quintas Energy</div></div></div>	<div><div><div></div><div>HDB</div></div><div><div>DO NOT SCALE DRAWINGS. CHECK ALL DIMENSIONS. FIGURED DIMENSIONS TAKE PRECEDENCE. THESE DRAWINGS ARE NOT FOR CONSTRUCTION</div></div></div>	C	06/12/2023	Final submission	<div><div><div></div><div>Proposed Battery Energy Storage System (BESS)</div><div>103 Cabbage Tree Road, Williamstown</div></div></div>	<div><div><div></div><div>ELEVATIONS</div></div><div><div>Development Application</div></div><div><div>SCALE: 1:200</div><div>DATE: 06/12/23</div><div>JOB No: 23.41</div></div><div><div>ISSUE: C</div><div>DWG No: LDA05</div><div>PLOTTED: 1</div></div><div><div>DRAWN: DS</div><div>CHECKED: AC</div><div>APPROVED: AC</div></div></div>		
							B	29/11/2023	Draft submission for review				
							A	27/11/2023	Preliminary concept for review				
							REV	DATE	NOTATION/ AMENDMENT				



LOCATION MAP (NOT TO SCALE)



01
06

VIEWPOINT 1

NTS



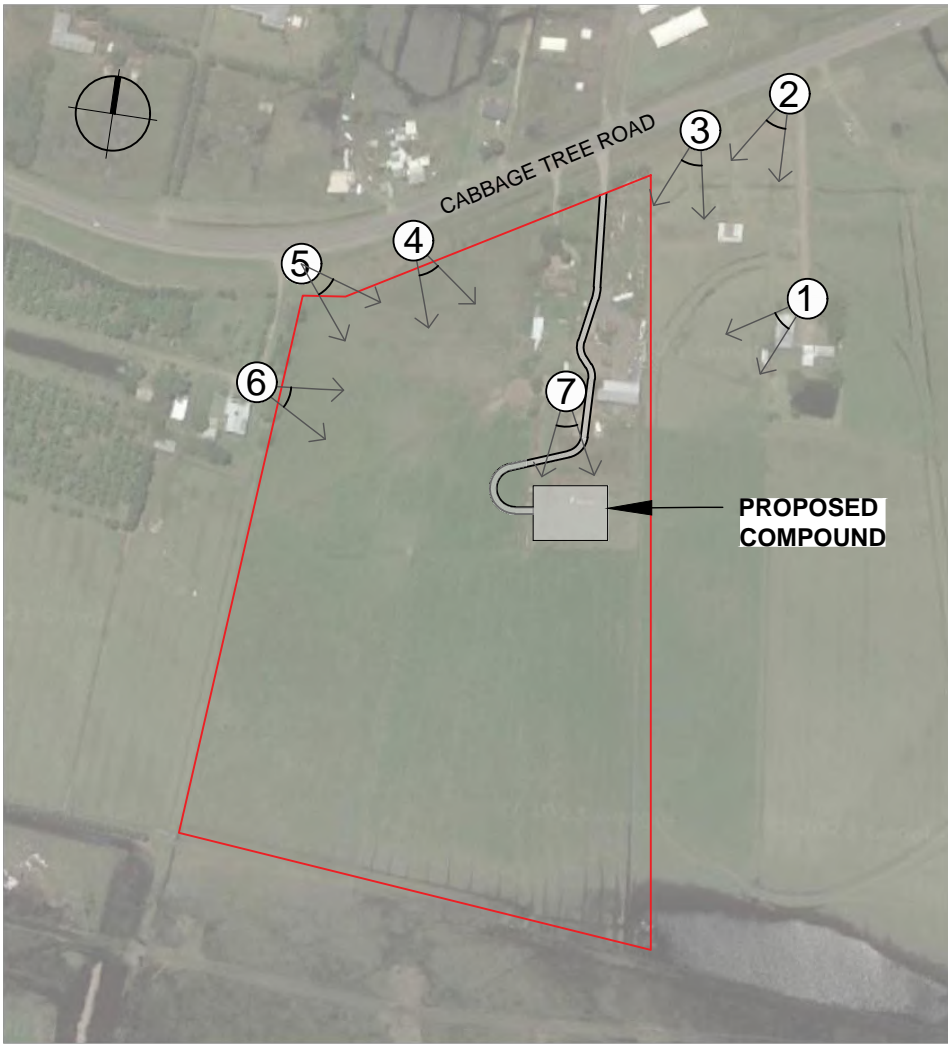
01
06

VIEWPOINT 1 (PLANTING MATURITY)

NTS

NOT FOR CONSTRUCTION

LANDSCAPE ARCHITECT:		BAR SCALE:	ENGINEERING AND PLANNING:	ASPECT:	CLIENT:	PROJECT:			TITLE:			STATUS:					
<div><div></div><div>Conus Landscape Architecture 158 Grandview Rd, New Lambton Hts, NSW 2305. <div><div>p.</div><div>02 4950 9195</div></div><div><div>e.</div><div>info@conuslandscapearchitecture.com.au</div></div><div><div>w.</div><div>conuslandscapearchitecture.com.au</div></div><div><div>abn.</div><div>52 144 562 756</div></div></div><div><div>Australian Institute of Landscape Architects</div></div></div> <div><div>Registered Landscape Architect: Anton Conus AILA No. 8420</div></div>			Hive Battery Developments Pty Ltd Quintas Energy	HDB				Proposed Battery Energy Storage System (BESS) 103 Cabbage Tree Road, Williamtown			VIEWPOINT 1			Development Application			
					C	06/12/2023	Final submission										
					B	29/11/2023	Draft submission for review										
					A	27/11/2023	Preliminary concept for review										
					REV	DATE	NOTATION/ AMENDMENT										
		DO NOT SCALE DRAWINGS. CHECK ALL DIMENSIONS. FIGURED DIMENSIONS TAKE PRECEDENCE. THESE DRAWINGS ARE NOT FOR CONSTRUCTION			ISSUE:			DWG No:		PLOTTED:		DRAWN:		CHECKED:		APPROVED:	
					C			LDA06		1		DS		AC		AC	



LOCATION MAP (NOT TO SCALE)





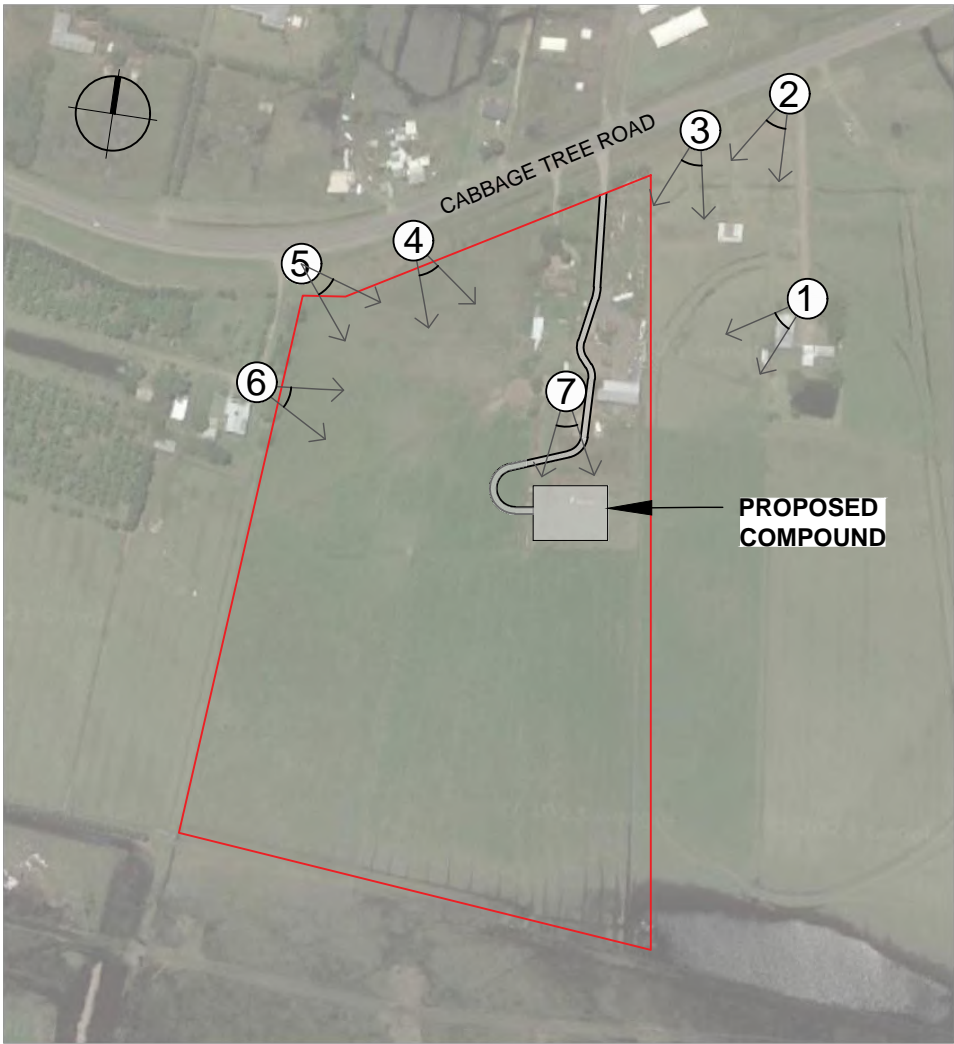
01 07 VIEWPOINT 2 NTS



01 07 VIEWPOINT 2 (PLANTING MATURITY) NTS

NOT FOR CONSTRUCTION

LANDSCAPE ARCHITECT:		BAR SCALE:	ENGINEERING AND PLANNING:	ASPECT:	CLIENT:	PROJECT:			TITLE:			STATUS:					
<div><div><div><div>Conus Landscape Architecture</div><div>158 Grandview Rd, New Lambton Hts, NSW 2305.</div><div><div>p. 02 4950 9195</div><div>e. info@conuslandscapearchitecture.com.au</div><div>w. conuslandscapearchitecture.com.au</div><div>abn. 52 144 562 756</div></div><div><div>conus</div><div>LANDSCAPE ARCHITECTURE</div></div></div><div><div><div>Australian Institute of Landscape Architects</div></div></div></div><div>Registered Landscape Architect: Anton Conus AILA No. 8420</div></div>					Hive Battery Developments Pty Ltd	HDB			Proposed Battery Energy Storage System (BESS)			VIEWPOINT 2			Development Application		
						C	06/12/2023	Final submission									
						B	29/11/2023	Draft submission for review									
						A	27/11/2023	Preliminary concept for review									
						REV	DATE	NOTATION/ AMENDMENT									
						DO NOT SCALE DRAWINGS. CHECK ALL DIMENSIONS. FIGURED DIMENSIONS TAKE PRECEDENCE. THESE DRAWINGS ARE NOT FOR CONSTRUCTION											
												ISSUE:	DWG No:	PLOTTED:	DRAWN:	CHECKED:	APPROVED:
												C	LDA07	1	DS	AC	AC



LOCATION MAP (NOT TO SCALE)



01
08

VIEWPOINT 3

NTS





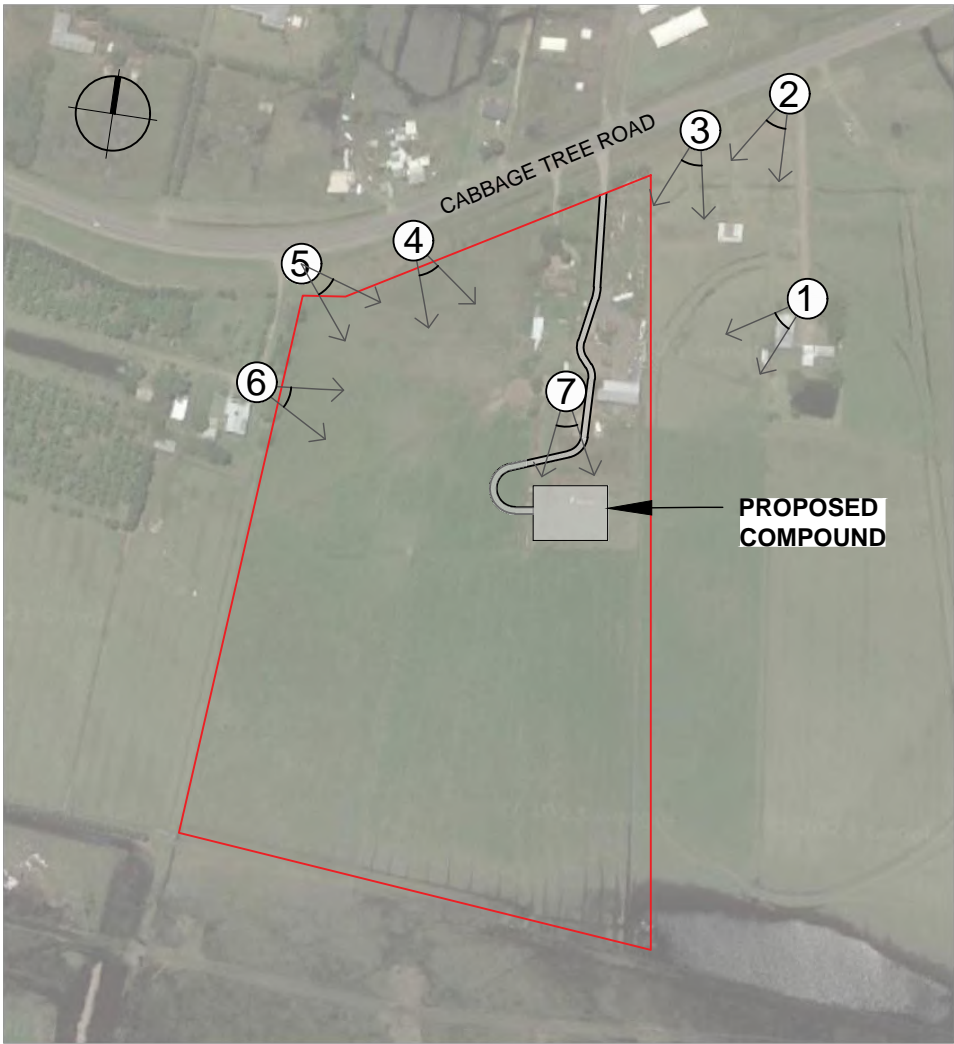
01
08

VIEWPOINT 3 (PLANTING MATURITY)

NTS

NOT FOR CONSTRUCTION

LANDSCAPE ARCHITECT:		BAR SCALE:	ENGINEERING AND PLANNING:	ASPECT:	CLIENT:	PROJECT:	TITLE:	STATUS:		
 <div>Conus Landscape Architecture 158 Grandview Rd, New Lambton Hts, NSW 2305. p. 02 4950 9195 e. info@conuslandscapearchitecture.com.au w. conuslandscapearchitecture.com.au abn. 52 144 562 756</div>	 <div>Australian Institute of Landscape Architects</div>		HDB	Hive Battery Developments Pty Ltd Quintas Energy		Proposed Battery Energy Storage System (BESS) 103 Cabbage Tree Road, Williamtown	VIEWPOINT 3	Development Application		
								SCALE:	DATE:	JOB No:
								-	06/12/23	23.41
								DRAWN:	CHECKED:	APPROVED:
								DS	AC	AC
Registered Landscape Architect: Anton Conus AILA No. 8420							ISSUE:	DWG No:	PLOTTED:	
							C	LDA08	1	
							DO NOT SCALE DRAWINGS. CHECK ALL DIMENSIONS. FIGURED DIMENSIONS TAKE PRECEDENCE. THESE DRAWINGS ARE NOT FOR CONSTRUCTION			



LOCATION MAP (NOT TO SCALE)



01
10

VIEWPOINT 5

NTS





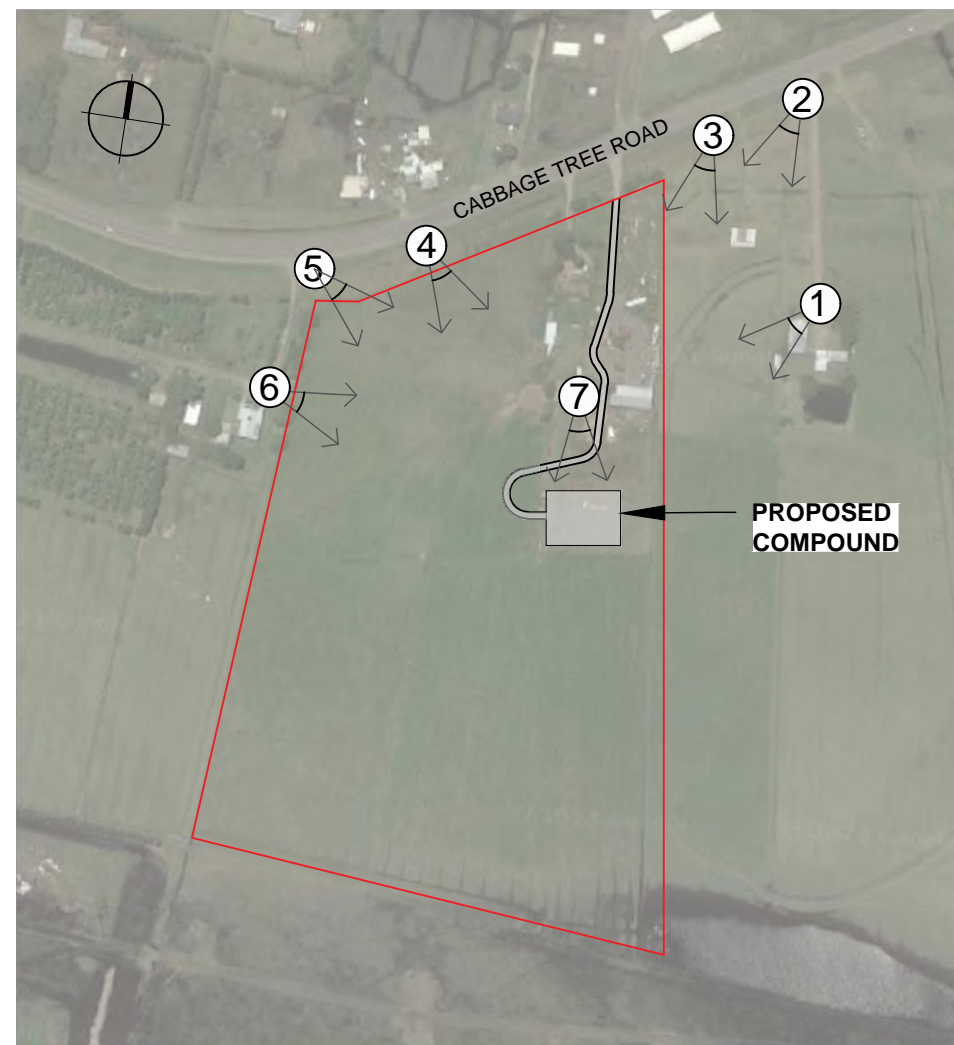
01
10

VIEWPOINT 5 (PLANTING MATURITY)


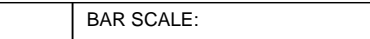
NTS

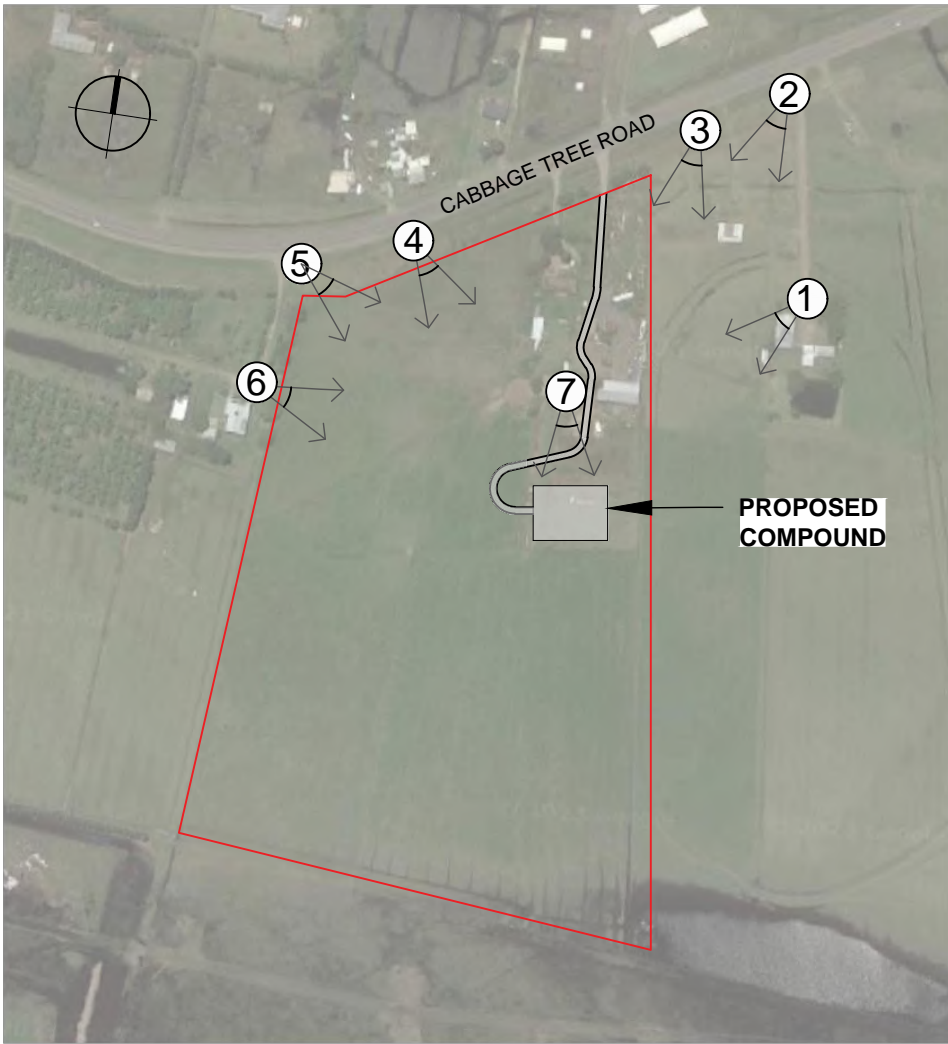
NOT FOR CONSTRUCTION

LANDSCAPE ARCHITECT:		BAR SCALE:	ASPECT:	CLIENT:	ENGINEERING AND PLANNING:				PROJECT: Proposed Battery Energy Storage System (BESS) 103 Cabbage Tree Road, Williamtown	TITLE: VIEWPOINT 5			STATUS: Development Application				
 <div>Conus Landscape Architecture 158 Grandview Rd, New Lambton Hts, NSW 2305. p. 02 4950 9195 e. info@conuslandscapearchitecture.com.au w. conuslandscapearchitecture.com.au o. 52 144 562 756</div>	 <div>Australian Institute of Landscape Architects</div>			Hive Battery Developments Pty Ltd Quintas Energy	HDB			C		06/12/2023	Final submission	ISSUE: C	DWG No: LDA10	PLOTTED: 1	DRAWN: DS	CHECKED: AC	APPROVED: AC
								B		29/11/2023	Draft submission for review						
								A		27/11/2023	Preliminary concept for review						
								REV		DATE	NOTATION/ AMENDMENT						
								DO NOT SCALE DRAWINGS. CHECK ALL DIMENSIONS. FIGURED DIMENSIONS TAKE PRECEDENCE. THESE DRAWINGS ARE NOT FOR CONSTRUCTION									



NOT FOR CONSTRUCTION

LANDSCAPE ARCHITECT:		BAR SCALE:	ENGINEERING AND PLANNING:	CLIENT:	PROJECT:	TITLE:	STATUS:																															
<div><p>Conus Landscape Architecture 158 Grandview Rd, New Lambton Hills, NSW 2305.</p><p>p. 02 4950 9195 e. info@conuslandscapearchitecture.com.au w. conuslandscapearchitecture.com.au abn. 52 144 562 756</p><p>Registered Landscape Architect: Anton Conus AILA No. 8420</p></div>		<div><p>Australian Institute of Landscape Architects</p></div>		<div><p>Hive Battery Developments Pty Ltd</p><p>Quintas Energy</p></div>	<div><p>HDB</p><table><tr><td>C</td><td>06/12/2023</td><td>Final submission</td></tr><tr><td>B</td><td>29/11/2023</td><td>Draft submission for review</td></tr><tr><td>A</td><td>27/11/2023</td><td>Preliminary concept for review</td></tr><tr><td>REV</td><td>DATE</td><td>NOTATION/ AMENDMENT</td></tr></table><p>DO NOT SCALE DRAWINGS. CHECK ALL DIMENSIONS. FIGURED DIMENSIONS TAKE PRECEDENCE. THESE DRAWINGS ARE NOT FOR CONSTRUCTION</p></div>	C	06/12/2023	Final submission	B	29/11/2023	Draft submission for review	A	27/11/2023	Preliminary concept for review	REV	DATE	NOTATION/ AMENDMENT	<div><p>Proposed Battery Energy Storage System (BESS)</p><p>103 Cabbage Tree Road, Williamstown</p></div>	<div><p>VIEWPOINT 6</p><table><tr><td>ISSUE:</td><td>DWG No:</td><td>PLOTTED:</td></tr><tr><td>C</td><td>LDA11</td><td>1</td></tr></table></div>	ISSUE:	DWG No:	PLOTTED:	C	LDA11	1	<div><p>Development Application</p><table><tr><td>SCALE:</td><td>DATE:</td><td>JOB No:</td></tr><tr><td>-</td><td>06/12/23</td><td>23.41</td></tr><tr><td>DRAWN:</td><td>CHECKED:</td><td>APPROVED:</td></tr><tr><td>DS</td><td>AC</td><td>AC</td></tr></table></div>	SCALE:	DATE:	JOB No:	-	06/12/23	23.41	DRAWN:	CHECKED:	APPROVED:	DS	AC	AC
C	06/12/2023	Final submission																																				
B	29/11/2023	Draft submission for review																																				
A	27/11/2023	Preliminary concept for review																																				
REV	DATE	NOTATION/ AMENDMENT																																				
ISSUE:	DWG No:	PLOTTED:																																				
C	LDA11	1																																				
SCALE:	DATE:	JOB No:																																				
-	06/12/23	23.41																																				
DRAWN:	CHECKED:	APPROVED:																																				
DS	AC	AC																																				



LOCATION MAP (NOT TO SCALE)



01
12

VIEWPOINT 7

NTS



01
12

VIEWPOINT 7 (PLANTING MATURITY)

NTS

NOT FOR CONSTRUCTION

LANDSCAPE ARCHITECT:		BAR SCALE:	ENGINEERING AND PLANNING:	ASPECT:	CLIENT:	PROJECT:			TITLE:			STATUS:				
<div><div></div><div>Conus Landscape Architecture 158 Grandview Rd, New Lambton Hts, NSW 2305. <div><div>p.</div><div>02 4950 9195</div></div><div><div>e.</div><div>info@conuslandscapearchitecture.com.au</div></div><div><div>w.</div><div>conuslandscapearchitecture.com.au</div></div><div><div>abn.</div><div>52 144 562 756</div></div></div><div><div>Australian Institute of Landscape Architects</div></div></div> <div><div>Registered Landscape Architect: Anton Conus AILA No. 8420</div></div>			Hive Battery Developments Pty Ltd Quintas Energy	HDB				Proposed Battery Energy Storage System (BESS) 103 Cabbage Tree Road, Williamtown			VIEWPOINT 7			Development Application		
					C	06/12/2023	Final submission									
					B	29/11/2023	Draft submission for review									
					A	27/11/2023	Preliminary concept for review									
					REV	DATE	NOTATION/ AMENDMENT									
			DO NOT SCALE DRAWINGS. CHECK ALL DIMENSIONS. FIGURED DIMENSIONS TAKE PRECEDENCE. THESE DRAWINGS ARE NOT FOR CONSTRUCTION			ISSUE:			DWG No:	PLOTTED:	DRAWN:	CHECKED:	APPROVED:			
						C	LDA12	1	DS	AC	AC					

MAINTENANCE SPECIFICATION (52 weeks Plant Establishment Period)

Maintenance of the proposed development will be in accordance with "Port Stephens Council's DCP, 2010".

1. GENERAL

The Contractor will be responsible for maintaining all areas within private property as follows:

- All initial planting should be healthy, pest and disease free.
- All plants should be monitored for pests and diseases every three days for the first four weeks and then every three months. Plants effected badly by pests and diseases should be removed, disposed of off site and replaced.
- Young seedlings are desirable to some species such as rabbits, hares and macropods and if they are considered a problem, plastic tree guards should be used around each plant or reinstated where removed.
- Biological controls are the preferred treatment for pests and diseases. Any chemicals used for pest and disease control must be registered for use in aquatic situations by the National Registration Authority, as indicated on the label.
- Treatment of pests and diseases should be conducted at the same time to avoid reinfestation from adjacent areas.
- Grassed areas will be mowed and landscape beds mulched. Any damage done to nature strip shall be repaired including replacement of street trees and restoration of grassed areas as required.
- Mowing will be kept to a blade height of 30mm-70mm and frequency will be in accordance with the seasons. All edges will be trimmed with a whipper-snipp as frequently as mowing is required.
- Mowing will vary seasonally. Once in a three week cycle is adequate within most months other than 'deep summer' and 'deep winter' environmental conditions.
- Fertiliser shall be applied to manufacturer's requirements.
- Weeding maintenance should be monitored and completed when periodically.
- Weeds will be effectively controlled by the use of mulching and densely planting groundcovers to combat invasion. Where necessary herbicides may be used to control weed infestation.
- Plants will be checked for pest and diseases regularly, any pesticides used will be broad range and have low toxicity.
- Prune as required only. Prune in accordance with Ross Clark's 'Nat Spec'.
- Plant replacement – dead and dying plants should be replaced immediately by the Landscape Contractor; vandalised plants should be replaced to a maximum of two times by the Landscape Contractor. Thereafter, plants replaced should be at the client's expense. All trees to be replaced to be accordance with Ross Clark's 'NatSpec'.
- Stakes and ties of trees to be removed at the end of 52 week
- Using an irrigation system connected to an outside water tank, turf and planting areas to be watered three times per week within the first month, then twice weekly for the next two months. Thereafter, taper to once per month to harden site conditions whilst allowing the maximum root growth within the initial quarter.
- Watering frequency will vary according to season and weather variations. Council's water restriction policy must be adhered to at all times.
- A Maintenance Log is to be kept by the contractor and shown to the Landscape Architect upon request.

2. TREES AND SHRUBS

2.1 New trees - first 2 months following planting

- Monitor soil moisture as this will vary depending on soil and weather conditions.
- As a general guide, water each tree with 10 litres of water three times in the first two weeks, then once per week and 5 litres of water for each shrub.
- Maintain stakes and tree guards (if applicable) vertically and replace immediately if broken.
- Remove encroaching grasses and weeds from the mulched area using herbicides at label rates, or by hand removal.
- Inspect foliage, branches and trunk for any indications of pest and disease infestations. Control where necessary.
- Replenish mulch to retain an even 75mm depth.
- Replace failed trees immediately.

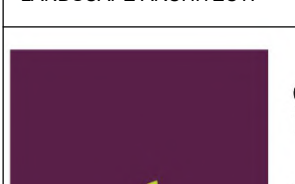
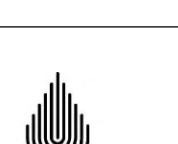
2.2 New trees - from 2-12 months following planting

- Inspect trees and shrubs monthly and water at 10 litres per tree, 5 litres per shrub if required.
- Retain mulch at 75mm depth at all times.
- Remove hessian ties if trees are self-supporting after six months, or re-tie as needed.
- All stakes must be removed by the end of the maintenance period and disposed of in a responsible manner.
- Retain hardwood stakes as markers for the twelve month period.
- Keep the mulched area free of grasses and weeds at all times.
- Inspect foliage, branches and trunk for any indications of pest and disease infestations. Control where necessary.
- After six months, lightly prune trees which need branch direction or branch removal to permit traffic access or pedestrian access. Do not top or lop any tree. Carry out formative pruning to remove any low branches and encourage a clear stem.
- Replace any tree which is dead or in irreversible decline.
- Twelve months after planting, fertilise trees with slow release fertiliser at manufacturer's recommended rates.

2.3 Maintenance of established trees and shrubs

- Inspect trees at six monthly intervals in the second and third year of growth.
- Retain mulch at 75mm depth during this period.
- Remove ties and stakes if trees are self-supporting or re-tie if still needed.
- Remove grass and weeds from mulched area.
- Inspect foliage, branches and trunk for any indications of pest and disease infestations. Control where necessary.
- Prune trees which need directional branch pruning to produce one main trunk to allow pedestrian and traffic access.
- Replace any tree which is dead or in irreversible decline.
- For the first three years after planting, fertilise trees annually with slow release fertiliser at manufacturers recommended rates.
- After trees have been growing for at least three years and have established well and are flourishing, inspection should be made at least annually. Any necessary pruning or tree surgery should be carried out as required to maintain healthy growth.
- When mature trees have been removed, the stump is to be ground out and the areas around made good. Position trees in the area adjacent to the existing tree, or consult Council's Landscape Architect for an alternative location.

NOT FOR CONSTRUCTION

LANDSCAPE ARCHITECT:			BAR SCALE:			ASPECT:			CLIENT:			ENGINEERING AND PLANNING:			PROJECT:			TITLE:			STATUS:																										
<div><div>Conus Landscape Architecture 158 Grandview Rd, New Lambton Hts, NSW 2305. p. 02 4950 9195 e. info@conuslandscapearchitecture.com.au w. conuslandscapearchitecture.com.au abn. 52 144 562 756</div></div> <div>Registered Landscape Architect: Anton Conus AILA No. 8420</div>			<div><div>Australian Institute of Landscape Architects</div></div>						Hive Battery Developments Pty Ltd			HDB			<table><tr><td>C</td><td>06/12/2023</td><td>Final submission</td></tr><tr><td>B</td><td>29/11/2023</td><td>Draft submission for review</td></tr><tr><td>A</td><td>27/11/2023</td><td>Preliminary concept for review</td></tr><tr><td>REV</td><td>DATE</td><td>NOTATION/ AMENDMENT</td></tr></table> <div>DO NOT SCALE DRAWINGS. CHECK ALL DIMENSIONS. FIGURED DIMENSIONS TAKE PRECEDENCE THESE DRAWINGS ARE NOT FOR CONSTRUCTION</div>			C	06/12/2023	Final submission	B	29/11/2023	Draft submission for review	A	27/11/2023	Preliminary concept for review	REV	DATE	NOTATION/ AMENDMENT	Proposed Battery Energy Storage System (BESS)			103 Cabbage Tree Road, Williamstown			MAINTENANCE SPECIFICATION			<table><tr><td>SCALE:</td><td>DATE:</td><td>JOB No:</td></tr><tr><td>-</td><td>06/12/23</td><td>23.41</td></tr></table>			SCALE:	DATE:	JOB No:	-	06/12/23	23.41
C	06/12/2023	Final submission																																													
B	29/11/2023	Draft submission for review																																													
A	27/11/2023	Preliminary concept for review																																													
REV	DATE	NOTATION/ AMENDMENT																																													
SCALE:	DATE:	JOB No:																																													
-	06/12/23	23.41																																													
															ISSUE:			DWG No:		PLOTTED:		DRAWN:		CHECKED:		APPROVED:																					
															C			LDA13		1		DS		AC		AC																					